

COME  
THOU  
FOUNT

**FOUNDRY UNITED METHODIST CHURCH**

---

**11:15 A.M. | WORSHIP CELEBRATION ONLINE**



# Welcome

Foundry Church has been serving downtown Washington and the wider world since 1814. Foundry is a Reconciling Congregation, affirming the call of the gospel of Jesus Christ to be in ministry with all people of all races, gender identities, sexualities, ages, immigration status, and physical conditions. We are all on a spiritual journey and we want you to feel welcome here. Please visit [www.foundryumc.org](http://www.foundryumc.org) for more information about our congregation, submit prayer requests, and let us know you've been with us in worship today.

## REFERENCES TO GOD

References to God in traditional prayers and hymns may sometimes be gender-specific. As we pray and sing together, you are invited to substitute terms that reflect your understanding of the full inclusiveness of the spirit of God. You are also invited to sing hymns and speak parts of the services, such as the Lord's Prayer, in your native tongue.

## CARE AND PRAYER

Please fill out the Virtual Prayer request cards at <https://www.foundryumc.org/prayer>. Our Clergy and prayer team will follow up with you.

## INVITATIONS TO ONLINE PARTICIPATION

As we worship together virtually today, we invite you to gather the following items:

- A candle and, if needed, a way to light it.
- A bowl or vessel of water.
- Your preferred Bible or Bible app.
- Your favorite food or beverage for our Love Feast

# Come Thou Fount

God's grace and provision are at the heart of our texts throughout this series—as are the challenges we face in being able to trust those gifts of God in our lives. As we explore the biblical stories, we also celebrate our life in community through the annual pulpit exchange with sister church, Asbury UMC, our 25th anniversary as a Reconciling Congregation, and opportunities to connect through small groups, classes, worship, and service. God is truly the “fount of every blessing,” a truth we will be lifting up throughout this series. Join us and be encouraged.

**11:15 A.M. WORSHIP CELEBRATION**

**Invitations to Participation**

Ginger E. Gaines-Cirelli

---

**Lighting Our Candles**

---

**Welcome**

Ginger E. Gaines-Cirelli

---

**Hymn W&S #3149**

*Lori True*

A PLACE AT THE TABLE

Verses 1 & 2

---

**Celebration of Holy Baptism**

**Lillian Grace Ballard-Means**

daughter of Becky Ballard and John Means

Do you watching now, as Christ's body, the Church, reaffirm both your rejection of sin and your commitment to Christ? Is so say, **we do.**

Will you nurture one another in the Christian faith and life and with God's help include Lily in your care? **We will.**

**With God's help we will proclaim the good news and live according to the example of Christ. We will surround Lily, John, Becky, and Nathan with a community of love and forgiveness that she may grow in her trust of God and be found faithful in her service to others. We will pray for Lily that she may be a true disciple who walks in the way that leads to life.**

**One Voice:** ...Do all in your power to increase their faith, confirm their hope, and perfect them in love.

**Many Voices:** We give thanks for all that God has already given you and we welcome you in Christian love. As members together with you in the body of and in Foundry United Methodist Church, we renew our covenant faithfully to participate in the ministries of the Church by our prayers, our presence, our gifts, our service, and our witness, that in everything God may be glorified through Jesus Christ.

## Children's Message

---

**Call To Prayer** UMH #328

*Lanny Wolfe*

SURELY THE PRESENCE OF THE LORD

---

## Congregational Prayer

---

**Scripture Reading**

Joanne Garlow

LUKE 12:13-21

**Anthem**

*C. Hubert Parry*

I WAS GLAD WHEN THEY SAID UNTO ME

---

**Sermon**

Ginger E. Gaines-Cirelli

**WHAT DO YOU COUNT?**

---

## Offertory

---

**Music at the Offertory**

*Charles Wesley, Hyfrydol Tune, arr. Mack Wilberg*

LOVE DIVINE, ALL LOVES EXCELLING

---

**Doxology** UMH #94

*Lasst Uns Erfreuen*

Praise God, from whom all blessings flow;

Praise God, all creatures here below. Alleluia! Alleluia!

Praise God, the source of all our gifts!

Praise Jesus Christ, whose power uplifts!

Praise the Spirit, Holy Spirit! Alleluia! Alleluia! Alleluia!

**Hymn** UMH #400

*Robert Robinson, Wyeth's Repository  
of Sacred Music, Nettleton Tune*

COME, THOU FOUNT OF EVERY BLESSING

---

**Benediction**

Ginger E. Gaines-Cirelli

---

**Postlude**

*J. S. Bach, Guest Artists Series*

TOCCATA IN E MAJOR, BWV 566 (FINAL FUGUE & CODA)

*Eric Plutz, organist*

All music featured on our livestream links are used by permission with CCLI License #2668115. All previously recorded video filmed in the sanctuary was done prior to March 16, 2020.

### **Join us for “Coffee Hour”**

---

Meet us on Zoom at 12:30 for a virtual coffee hour! Connect with a small group of Foundry folks in a breakout room for fellowship and conversation and don't forget to bring your own coffee or tea! Join [here](#) using your smartphone camera or webcam. “See” you there!

# A Place at the Table

3149



1. For ev - ery-one born, a place at the ta - ble, for  
 2. For wom - an and man, a place at the ta - ble, re -  
 3. For young and for old, a place at the ta - ble, a  
 4. For just and un - just, a place at the ta - ble, a -  
 5. For ev - ery-one born, a place at the ta - ble, to

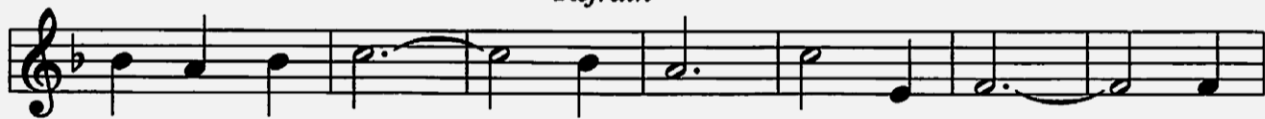


ev - ery-one born, clean wa - ter and bread, — a shel - ter, a  
 vis - ing the roles, de - cid - ing the share, — with wis - dom and  
 voice to be heard, a part in the song, — the hands of a  
 bus - er, a - bused, with need to for - give, — in an - ger, in  
 live with - out fear, and sim - ply to be, — to work, to speak



space, a safe place for grow - ing, for ev - ery-one born, a  
 grace, di - vid - ing the pow - er, for wom - an and man, a  
 child in hands that are wrin - kled, for young and for old, the  
 hurt, a mind - set of mer - cy, for just and un - just, a  
 out, to wit - ness and wor - ship, for ev - ery-one born, the

*Refrain*



star o - ver - head. —  
 sys - tem that's fair. —  
 right to be - long. — And God will de - light — when  
 new way to live. —  
 right to be free. —



we are cre - a - tors of jus - tice and joy, — yes, God will de -



light — when we are cre - a - tors of jus - tice, —



jus - tice and joy! —

WORDS: Shirley Erena Murray  
 MUSIC: Lori True

PLACE AT THE TABLE  
 11 10.11 10 with Refrain

Words © 1998 Hope Publishing Company; music © 2001 GIA Publications, Inc.

[Return >>](#)

# Surely the Presence of the Lord 328

D F#m Gmaj9 Em

Sure - ly the pres - ence of the Lord is in this place;

A7 D G/D

I can feel his might - y pow - er and his grace.

A7 D F#m

I can hear the brush of an - gels' wings,

Gmaj9 Em

I see glo - ry on each face; sure - ly the

A7 Em7 A7 D

pres - ence of the Lord is in this place.

WORDS: Lanny Wolfe, 1977  
MUSIC: Lanny Wolfe, 1977

WOLFE  
11 11.9 7 12

© 1977 Lanny Wolfe Music (A div. of Pathway Press)

[Return >>](#)

## Come, Thou Fount of Every Blessing 400

1. Come, thou Fount of ev - ery bless - ing, tune my heart to  
 2. Here I raise mine Eb - e - ne - zer; hith - er by thy  
 3. O to grace how great a debt - or dai - ly I'm con -

sing thy grace; streams of mer - cy, nev - er ceas - ing,  
 help I'm come; and I hope, by thy good plea - sure,  
 strained to be! Let thy good - ness, like a fet - ter,

call for songs of loud - est praise. Teach me some me - lo - dious  
 safe - ly to ar - rive at home. Je - sus sought me when a  
 bind my wan - dering heart to thee. Prone to wan - der, Lord, I

son - net, sung by flam - ing tongues a - bove. Praise the mount! I'm  
 stran - ger, wan - dering from the fold of God; he, to res - cue  
 feel it, prone to leave the God I love; here's my heart, O

fixed up - on it, mount of thy re - deem - ing love.  
 me from dan - ger, in - ter - posed his pre - cious blood.  
 take and seal it, seal it for thy courts a - bove.

WORDS: Robert Robinson, 1758 (1 Sam. 7:12)  
 MUSIC: Wyeth's *Repository of Sacred Music, Part Second*, 1813

NETTLETON  
 87.87 D

[Return »](#)



